

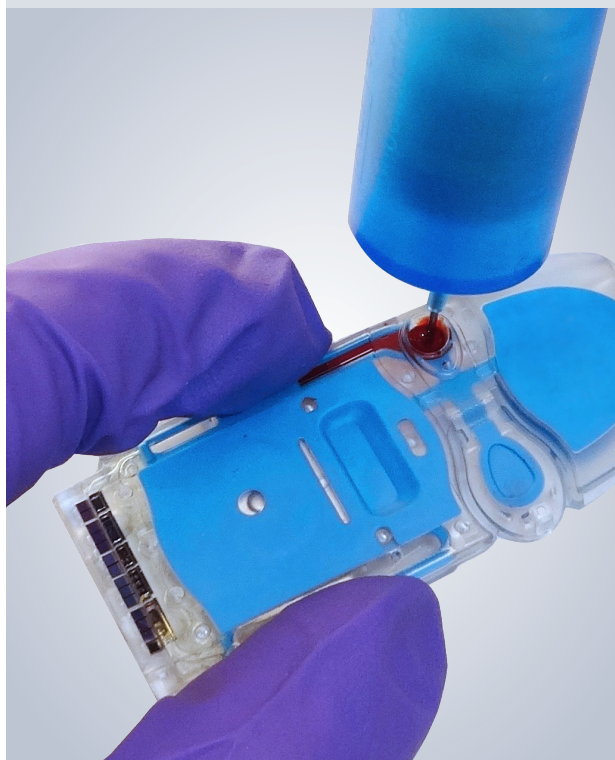
Optimizing the blood analysis process:



THE *i*-STAT® DISPENSING TIP PROVIDES AN EASY CARTRIDGE-FILLING SOLUTION

Designed with the *i*-STAT System end-user in mind

THE *i*-STAT DISPENSING TIP:



■ **is fast, safe, and easy to use**

Simply slide the Dispensing Tip onto any type of evacuated phlebotomy tube to dispense blood into the *i*-STAT cartridge; the Dispensing Tip allows the tube to remain closed, reducing the risk of blood-aerosols

■ **allows accurate, controlled blood application**

The end of the Dispensing Tip aligns with the cartridge port to allow the end-user to accurately dispense the desired amount of blood

■ **eliminates unnecessary steps**

Intuitive design streamlines the blood-transfer process

THE *i*-STAT DISPENSING TIP STREAMLINES THE BLOOD-TRANSFER PROCESS TO THE *i*-STAT CARTRIDGE

Designed with the *i*-STAT System end-user in mind:

SIMPLE STEPS: OVERVIEW USING THE *i*-STAT DISPENSING TIP



1

Place the Dispensing Tip onto the blood collection tube



2

Align the Dispensing Tip with the sample entry port on the *i*-STAT cartridge and dispense the sample



3

Once the desired amount of blood has been dispensed, place the cartridge into the *i*-STAT Analyzer to run the test



4

Within minutes, test results are displayed and can be uploaded to the patient's chart

See *Instructions for Use* for more detailed directions and follow *Universal Precautions* when handling blood.
For *in vitro* diagnostic use only.

ORDERING THE *i*-STAT DISPENSING TIP IS EASY

To order, call 1-800-323-9100 or contact your Abbott Point of Care sales representative

PART NUMBER	DESCRIPTION	PACKAGING
06F24-30*	<i>i</i> -STAT Dispensing Tip	500/box
06F24-20*	<i>i</i> -STAT Dispensing Tip	100/box

FOR US GOVERNMENT CUSTOMERS ONLY

06F24-16	<i>i</i> -STAT Dispensing Tip	500/box
----------	-------------------------------	---------

*Not available for US Government customers